

S9 Series Switches

Datasheet

Version: V1.2

Release Date: 2026/3

Product Overview

The S9 Series Switch features high-performance Layer 3 Core and data center switches powered by a next-generation MAC SoC. Leveraging advanced hardware processes, the series provides full Layer 3 networking capabilities for high-speed Data Center, Enterprise and operator environments



Highlight Features

- Data Center Fabric: Hardware-accelerated VXLAN with BGP-EVPN control plane for scalable overlay networks.
- RDMA: End-to-end data forwarding, build a lossless network without packet loss
- Line-Rate Security: MACsec (AES-CMAC) encryption for secure, hardware-based switch-to-switch link protection.
- Carrier-Grade Reliability: MLAG support for Active-Active redundancy, providing device-level failover and hitless upgrades.
- Nanosecond Precision: IEEE 1588 PTP (Precision Timing Protocol) for time-sensitive synchronization.

The S9 Series switches provide redundant hot-swappable power supplies (AC and DC are both available) and 4 bays with Field replaceable fan modules. Generally, airflow of this series is front to rear (AFO), but a customization of rear to front (AFI) airflow is also acceptable.

Feasible PSU and airflow

Items	AC	DC	AFO	AFI	Power Input	FAN
S9432OF	○	○	○	○	2	4
S9332DQ	○	○	○	○	2	6
S9364DQ	○	○	○	○	2	4
S9264BQ	○	○	○	○	2	4
S9232BQ-2X	○	○	○	○	2	5

S9 Series Products Overview

Models	Ethernet Ports	Management	PSU 1/PSU 2	Cooling
S9432OF	32 x 800G OSFP	Console: RJ45 to RS232 Ethernet: 1G Port	3200W/3200W CRPS	4 x Fan Modules (front-to-back airflow)
S9332DQ	32 x 400G QSFP112	Console: RJ45 to RS232 Ethernet: 1G Port Storage: USB	1300W/1300W CRPS	6 x Fan Modules (front-to-back airflow)
S9364DQ	64 x 400G QSFP112	Console: RJ45 to RS232 Ethernet: 1G Port Storage: USB	3200W/3200W CRPS	4 x Fan Modules (front-to-back airflow)
S9264BQ	64 x 200G QSFP56+2	Console: RJ45 to RS232 Ethernet: 1G Port Storage: USB	3200W/3200W CRPS	4 x Fan Modules (front-to-back airflow)
S9232BQ-2X	32 x 200G QSFP56+2 x 10G SFP+	Console: RJ45 to RS232 Ethernet: 1G Port Storage: USB	800W /800W CRPS	5 x Fan Modules (front-to-back airflow)

Product Specifications

Packet Switch capacity (Tbps)

- S9432OF: 51.2 Tbps (bidirectional)
- S9332DQ: 25.6Tbps(bidirectional)
- S9364DQ: 51.2 Tbps (bidirectional)
- S9264BQ: 25.6Tbps(bidirectional)
- S9232BQ-2X: 12.84Tbps(bidirectional)

Layer 2/Layer 3 Throughput (Gpps)

- S9432OF: 76.19 Gpps (bidirectional)
- S9332DQ: 38.09 Gpps (bidirectional)
- S9364DQ: 76.18 Tbps (bidirectional)
- S9264BQ: TBD
- S9232BQ-2X: 19.106 Gpps (bidirectional)

Power consumption

Worst case, all ports used, line-rate traffic

- S9432OF: TBD
- S9332DQ: 383W
- S9364DQ: TBD
- S9264BQ: TBD
- S9232BQ-2X: 580W

Dimensions (W x H x D) without package

- S9432OF: 44.2 x 8.8 x 56cm
- S9332DQ: 44.2 x 4.4 x 49.7cm
- S9364DQ: 44.2 x 8.8 x 62cm
- S9264BQ: TBD
- S9232BQ-2X : 44.2 x 4.4 x 47cm

Weight (Net weight/Gross weight)

- S9432OF: 11.8kg/16kg
- S9332DQ: 11.5kg/16kg
- S9364DQ: 20.34kg/24kg
- S9264BQ: TBD
- S9232BQ-2X: 9.2kg/11kg

Typical power consumption

- S9432OF: TBD
- S9332DQ: 307W
- S9364DQ:
- S9264BQ:
- S9232BQ-2X: 210W

Product Specifications

CPU

- Quad-core processor, ARM A53

MTBF

- All Model \geq 90000H

Memory

- eMMC: 8GB on all models
- DRAM: 2GB on all models

Environmental ranges

- Operating temperature: 0°C to 45°C
- Storage temperature: -40°C to 70°C
- Running Humidity: 10% to 90% (No condensation)
- Store Humidity: 5 to 95% (No condensation)

Temperature alarm

- Alarm threshold: 50°C

The S9 Series supports a comprehensive range of management options, including CLI, Web-based, and Cloud-managed platforms. Administrators can utilize SNMP v1/v2/v3, Telnet, and FTP, while security is bolstered by SSH2.0. Additionally, integrated OAM support ensures streamlined operations and more convenient network maintenance.

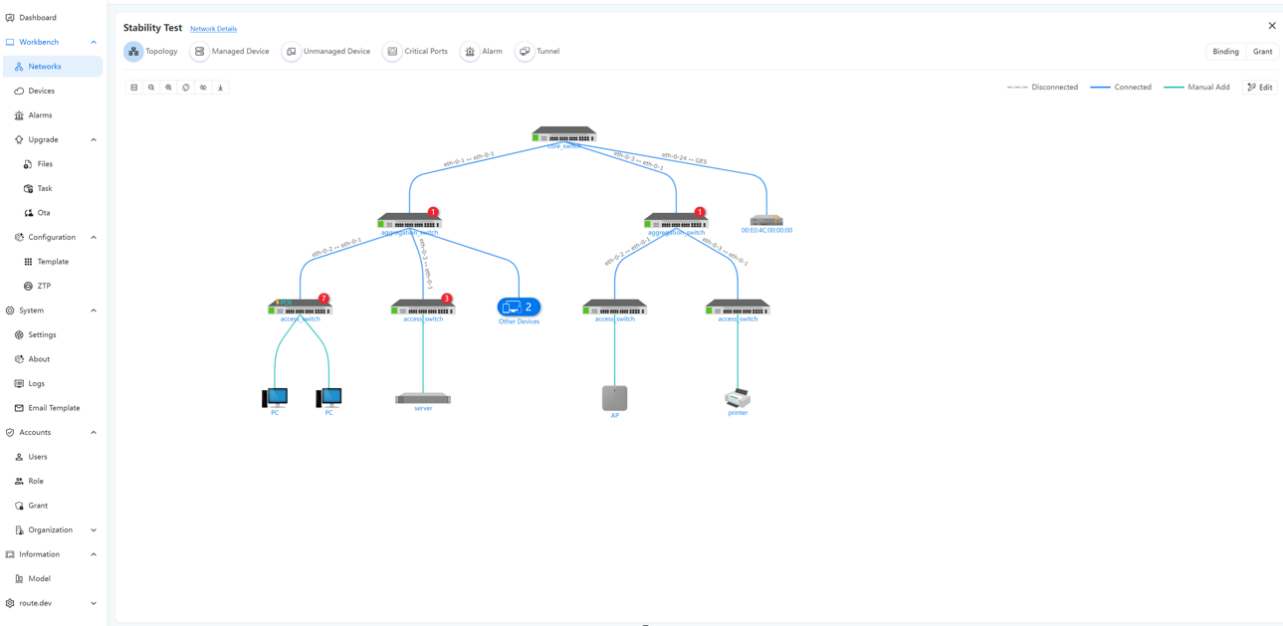
Cloud management

Leveraging deep expertise in datacenter and enterprise networking, ETHERNEXION introduces the Cloud Management System (DHCS). By integrating intelligent automation, DHCS streamlines network maintenance, reduces operational costs, and ensures a secure, high-performance environment tailored to evolving user demands.

The platform designed to provide digital solutions for the entire lifecycle of network elements, including switches, routers, and wireless APs:

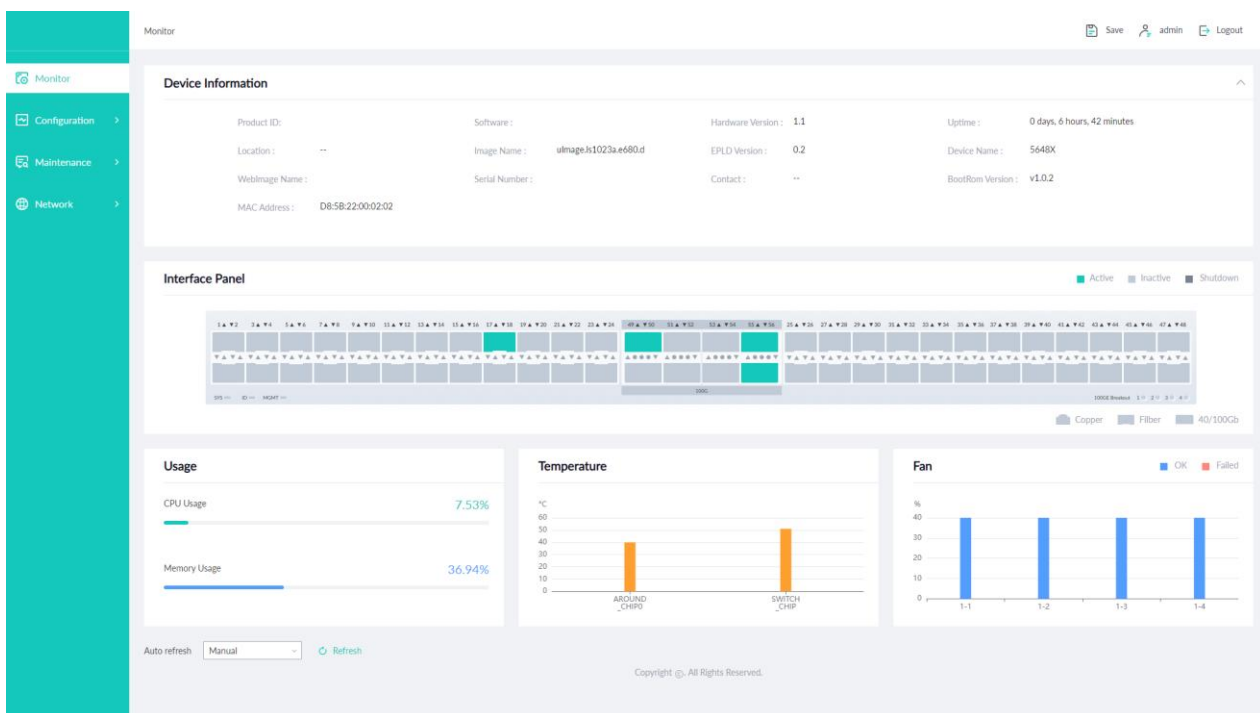
- Unified Device Management:** Provides a centralized platform for managing configuration policies, firmware upgrades, and statistical analysis of device operating data.
- Remote O&M Capabilities:** Utilizing a lightweight reverse proxy (FRP) and an integrated WebTerminal (SSH/Telnet), the system enables secure, cross-network access to intranet devices with latency under 200ms.
- Automated Deployment & Topology:** Supports Zero-Touch Deployment for large-scale automation. It also uses LLDP to automatically discover and draw intuitive, real-time network topology maps.
- Advanced Monitoring:** Includes a distributed MQTT engine for real-time status reporting (latency <50ms) and a multimodal database architecture (MySQL, InfluxDB, Redis, Elasticsearch) for efficient data analysis and logging.
- Security & Access Control:** Features a multi-level RBAC permission system, high-risk command interception, and WAF protection to block network attacks.

The following is a diagram illustrating cloud-managed ETHERNEXION switches. For more detailed information, please refer to “ETHERNEXION Cloud Controller specification”.



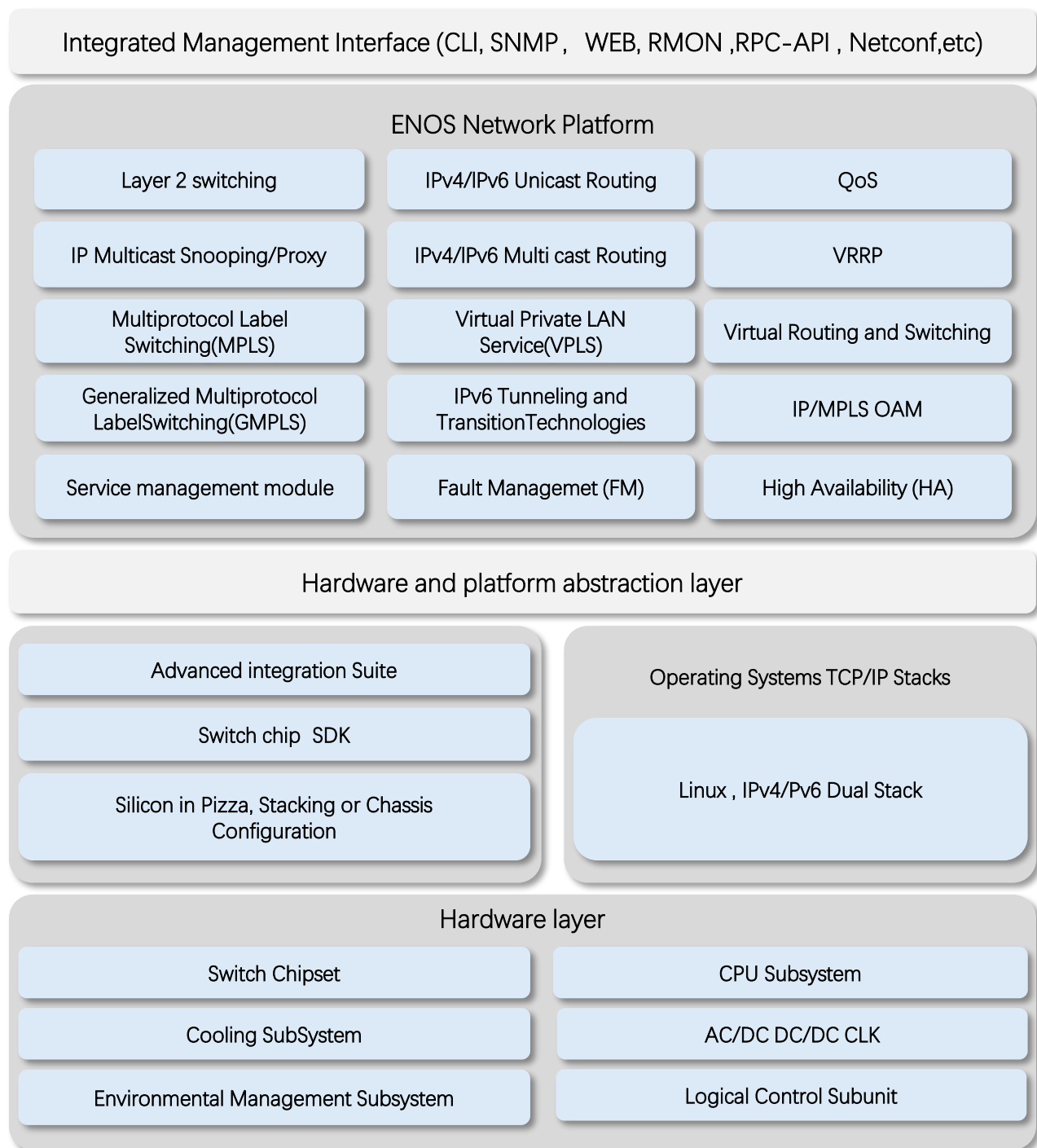
Visual WEB GUI

ENOS allows you to quickly configure common configuration items using a visual WEB GUI, which lowers the application threshold for users.



Software Specifications

ETHERNEXION implements a unified software platform, and the software capabilities supported by the devices are listed in the document [‘ENOS Software features’](#) .



- * All ETHERNEXION switches use a normalized software platform and image package file
- * Unified software version iteration plan
- * Unified user experience

Ordering Information

Items	Description
S9432OF	Data Center Switch, with 32*800G OSFP, 2*hot swappable power module, 4*Intelligent fan modules.
S9332DQ	Data Center switch, 32*400G QSFP112, 2*hot swappable power module, 6*Intelligent fan module
S9364DQ	Data Center switch, 64*400G QSFP112, 2*hot swappable power module, 4*intelligent fan module
S9264BQ	Data Center switch, 64*200G QSFP56, 2*hot swappable power module, 4*Intelligent fan module
S9232BQ-2X	Data Center switch, 32*200G QSFP56, 2*10G SFP+, 2*hot swappable power module, 5*Intelligent fan module

Software Licenses

Items	Description
Software License	MS, L3 enhance features software license key, Preinstalled
Software License	MA, MPLS features software license key

Accessory

Items	Front Mounting	Rear Mounting	Screw	Power Cord	Console (RS232 to RJ45)	Grounding Cable
S9432OF	2	4	14	2	1	1
S9332DQ	2	4	14	2	1	1
S9364DQ	2	4	14	2	1	1
S9264BQ	2	4	14	2	1	1
S9232BQ-2X	2	4	14	2	1	1

About ETHERNEXION:

ETHERNEXION - A technology-oriented company specializing in the development of ethernet switch products. EtherNexion is headquartered in Singapore, with a manufacturing base in Thailand and a business expansion office in India. With the continuous evolution of technology, ETHERNEXION has launched a range of differentiated ethernet switch products. Currently, the company's product line covers a range from 1G to 800G and can be used in scenarios such as enterprise networks, carrier networks, data centers, and AI computing. Currently, the main cooperation model for the company is OEM/ODM, dedicated to providing customers with flexible and end-to-end customized products and technical consulting services. Becoming the most trusted business partner for customers has always been the company's mission and principle.

Contact us:

ETHERNEXION NETWORKS PTE. LTD,

Singapore headquarter:

7500A BEACH ROAD #04-307 THE PLAZA SINGAPORE 199591

Corporate and Sales Email: business@ethernexion.com

Website: www.ethernexion.com

Factories in Thailand:

41/20 moo.8 Bowin,Siracha,Chonburi,Thailand 20230